



IIDA

ne

DESIGN AWARDS

14TH ANNUAL CELEBRATION

IIDA | NEW ENGLAND
chapter

CONTENTS

2021-2022 Board of Directors.....	4
Letter from IIDA NE President	5
2021 Co-Chairs Q&A	6
2021 Committee Members	7
2021 Chapter Sponsors	8
Categories	10
Student Judges	12
Student Entries	15
Professional Judges	18
Building Repositioning/Building Amenities.....	21
Community and Culture	25
Education - Small (Under 50,000 SF)	29
Education - Large (Over 50,000 SF).....	33
Health & Wellness	37
Hospitality - Hotel/Lodging	43
Hospitality - Restaurant/Retail.....	47
Residential - Multi-Unit.....	51
Residential - Private	57
Science & Research - Small (Under 45,000 SF)	61
Science & Research - Large (Over 45,000 SF).....	65
Student Housing	69
Unbuilt	73
Workspace 20,000 SF or Less.....	77
Workspace 20,000-40,000 SF	81
Workspace 40,000-80,000 SF	87
Workspace 80,000 SF or More	91

IIDA New England
2021-2022 BOARD OF DIRECTORS

PRESIDENT

Kara Hanson, IIDA
Dyer Brown & Associates

IMMEDIATE PAST PRESIDENT

Nico Flannery-Pitcher, IIDA
Lavallee Brensinger Architects

PRESIDENT ELECT

Lisa Statkiewicz, IIDA
Bergmeyer

VICE PRESIDENT OF ADVOCACY

Krista Easterly, IIDA
Sasaki

VICE PRESIDENT OF CHAPTER EVENTS

Colleen Wallace, IIDA
Gensler

VICE PRESIDENT OF COMMUNICATION

Daryl Avery Swanson, Industry IIDA
New England Paradigm

VICE PRESIDENT OF MEMBERSHIP

Leah Raabe, Industry IIDA
Mayer Fabrics

VICE PRESIDENT OF PHILANTHROPY

Rachel Winston, IIDA
CBT

VICE PRESIDENT OF PROFESSIONAL DEVELOPMENT

Deepa Venkat, IIDA
SGA

VICE PRESIDENT OF PROVIDENCE CITY CENTER

Jennifer Hanson, Industry IIDA
Mohawk Group

VICE PRESIDENT OF SPONSORSHIP

Amelia Papadakis, IIDA
Bergmeyer

VICE PRESIDENT OF STUDENT AFFAIRS

Nicole Ward, Associate IIDA
NBBJ

BOARD ADVISOR

Matt Hyatt, IIDA
Bergmeyer

Letter from the
IIDA NE PRESIDENT



Welcome to the 2021 IIDA NE Design Awards! Our community has been busy as we hit a new record receiving the most entries this year (115) in IIDA NE Design Awards history! Although we are virtual again this year, we have so much to be proud of. We hope that you enjoy the amazing entries and recognize the teamwork that has gone into these innovated, vibrant, and elegant project. It is clear from these entries that we are a strong community, we are thought leaders in all aspect of what goes into a project, and we lean on each other to have the best outcome we can for our clients. **Thank you** to the firms whose project teams worked tirelessly to bring these projects from inspiration to reality and then reconvened to submit an entry for judging tonight. Finally, thank you to the Design Awards committee who has put together yet another amazing virtual event.

Kara J. Hanson, IIDA

A handwritten signature in black ink, appearing to read 'Kara J. Hanson'.

2021-2022 IIDA NE President
Dyer Brown & Associates

Q&A with the
2021 CO-CHAIRS



Kelly Chiaradonna,
NCIDQ, IIDA
Wilson Butler
Architects

Kelly Chiaradonna

Carly Bassett
Associate IIDA
Total Office
Interiors

Carly Bassett

What is your role within the industry?

KC: Principal and Senior Interior Designer at Wilson Butler Architects

CB: Principal & Vice President of Design at TotalOffice Interiors

What's the biggest challenge you've faced this past year?

KC: Keeping the positive and collaborative spirit alive while we're all still in our own silos.

CB: Compartmentalization – work, family & personal life all merge together now. It's harder to dictate where & when one stops and the next begins.

What's the best thing to have come out of the last year?

KC: This fight for a more equitable and inclusive world. People have always been fighting, but it's at the forefront now, where it should've always been.

CB: Resiliency and Empathy. I think overall we're more conscientious of one another and the fact that everyone is going through some type of their own struggle.

What is one part of your routine that's changed over the last year?

KC: Pausing in the mornings to reflect. I never had time for that before. Or never made the time. Also being more in tune with nature.

CB: I don't feel as frantic as I did before (constantly running from one meeting to the next). Even though I'm busier now, it's great that a lot can be accomplished virtually.

What is one thing you discovered this year, that you now cannot live without

KC: Brewed cacao! It has replaced my morning coffee and I love it.

CB: My 1 year-old daughter, Hadley. She's the sweetest, most determined little thing. We're equally obsessed with each other. Does that count as 'discovered this year'?

Looking to the future...what is one thing that we as designers should be doing right now to benefit and improve future generations?

KC: Educate ourselves. Hold ourselves accountable. Be kind.

CB: As a collective, we need to address and counteract climate change immediately. As crafters of the built world, we have so much power to make an impact with a more sustainable approach to projects and small modifications to our daily lives.

IIDA New England Design Awards
2021 COMMITTEE MEMBERS



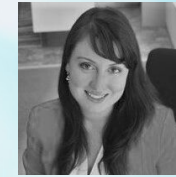
Carly Bassett
Co-Chair
Total Office Interiors



Kelly Chiaradonna
Co-Chair
Wilson Butler Architects



Ryan Akers
Sponsorship
Interface



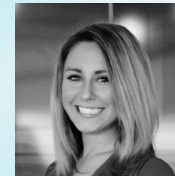
Svetlana Bekker
Event
Apex Lighting Solutions



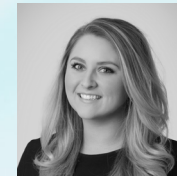
Meghan Bildner
Sponsorship
AllSteel



Heather Brunini
Professional
Entries
Teknion



Courtney Carlson
Event
Wayfair



Brittany Collins
Communications
WA Project Managers



Marcus Hamblin
Website
Genster



Josh Matteson
Professional
Entries
Matteson & Associates



Tiffany Riddle
Website
Omnilitte | Illuminate



Ashley Siswick
Professional
Entries
Camira Fabrics



Autumn Thompson
Graphics
Saam Architecture



Laura Tomlinson
Event
Isgenuity



Colleen Wallace
Board/VP of
Chapter Events
Genster

2021 CHAPTER SPONSORS

TITLE



SUSTAINING



PATRON



REFLEX LIGHTING



DONOR



ADVOCATE



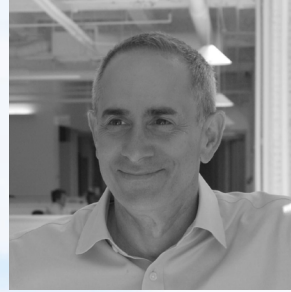
A+D ADVOCATE

CATEGORIES



STUDENT ENTRIES	SCIENCE & RESEARCH - LARGE (OVER 45,000 SF)
BUILDING REPOSITIONING/ BUILDING AMENITIES	RESIDENTIAL MULTI-UNIT
COMMUNITY & CULTURE	RESIDENTIAL PRIVATE
EDUCATION - SMALL (UNDER 50,000 SF)	STUDENT HOUSING
EDUCATION - LARGE (OVER 50,000 SF)	UNBUILT
HEALTH & WELLNESS	WORKSPACE (20,000 SF OR LESS)
HOSPITALITY - HOTEL/LODGING	WORKSPACE (20,000-40,000 SF)
HOSPITALITY - RESTAURANT/RETAIL	WORKSPACE (40,000-80,000 SF)
SCIENCE & RESEARCH - SMALL (UNDER 45,000 SF)	WORKSPACE (80,000 SF OR MORE)

STUDENT JUDGES



ANTHONY J. AMENTA,
AIA, LEED AP

Principal, Amenta Emma Architects

Tony Amenta is President and Co-Founder of Amenta Emma Architects and leads the firm's Multi-Family and Mixed-Use studios and serves on many advisory boards throughout Connecticut. His work includes public housing, commercial and retail projects throughout New England. Tony has lectured regionally on the topics of New Urbanist Planning, Retail Design and Workplace Strategy. As President of Amenta Emma, Tony has orchestrated the expansion of the firm's Hartford practice with the establishment of regional offices in Boston and New York.



COLLEEN ARRIA

Principal, Stantec

Colleen Arria is a Principal and Interior Designer with Stantec. She co-leads the workplace design practice in the Boston office and brings 19 years of experience across workplace, commercial mixed-use, institutional, multi-family and student housing design. She believes and strives to make design an inclusive and holistic process, enabling clients to discover how their goals and culture can be supported and transformed through collaborative placemaking.



MING THOMPSON,

AIA, IIDA

Co-founder, Atelier Cho Thompson

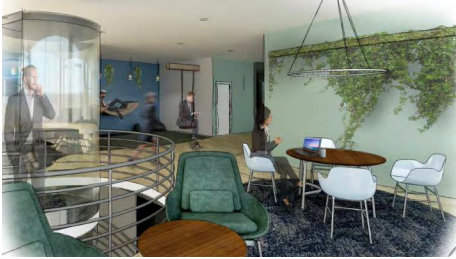
Ming Thompson is co-founder of Atelier Cho Thompson, a New Haven and San Francisco based multidisciplinary practice working between architecture, interiors, graphics, and strategy. Educated at Yale College and the Harvard Graduate School of Design, Ming was a recipient of the AIA Young Architect Award in 2020 and her firm has been the recipient of numerous national design honors.



STUDENT ENTRIES

4 ENTRIES

STUDENT ENTRIES



CORPORATE DESIGN - OCEAN SONICS

Madison Demberg / Endicott College / Undergraduate



ELAB-EXPERIENTIAL AND IMMERSIVE LEARNING CENTER

Seungeun Lee / Van Loan School at Endicott College / Graduate



GEXP

Molly K. O'Donnell / UMass Dartmouth / Undergraduate



P.L.A.Y. CORPORATE OFFICE

Alexandra Semenza / Endicott College / Undergraduate

PROFESSIONAL JUDGES



ANDREW LIEBERMAN
Design Director, AvroKO

Andrew is an Associate Principal and Design Director with AvroKO. Now with four offices and a global team of designers, Architecture and interior design remain at the heart of their firm, and they've built a reputation for concept-driven spaces that resonate with guests through their holistic design approach built on a unique central narrative. Their critically hailed portfolio includes restaurants, bars, hotels, retail, food halls, and residential projects from New York to Hong Kong, all characterized by a unique convergence between the ideals of the past and an off-beat, forward-looking sensibility. Andrew's background in History, his extensive world travels, and his years working on the front lines of hospitality all contribute to his understanding of human emotion and his passion for influencing and shaping the human experience through design.



DENA MOLNAR
VP of Design, Luna Textiles

Dena Molnar is Luna Textiles' Vice President of Design. Her background is in the design and fabrication of textiles for interior environments. Prior to completing an M.Des in Technology at The Harvard Graduate School of Design, she earned a BFA in textiles from Rhode Island School of Design. From there, she went on to New York City to design for leading manufacturers and suppliers of textiles to commercial architects and designers. She has over 15 years of industry experience, including time spent as a textile technology consultant to Google, a consultant for MIT, a senior designer at Maharam, and cofounder of WOVNS. Now based on the West Coast, Dena oversees the design team responsible for Luna's product line. Her vast experience in the industry allows her to continue Luna's tradition of unconventional design and groundbreaking fabrication.



HELENE OBERMAN
Managing Director, Interior Design Magazine

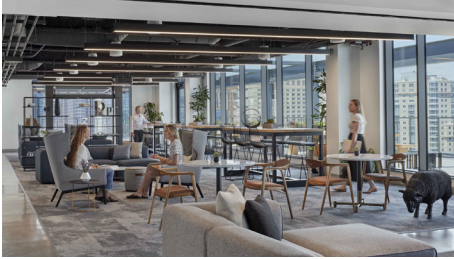
After honing her knowledge of the decorative arts in the rugs and carpets department at Sotheby's, Helene Oberman joined Interior Design in 2004 as the assistant to the editor in chief. Her natural talent for managing photographers, writers, and designers alike led to her 2008 promotion to Managing Editor, and in 2019 to her current position as Managing Director. Helene has served as a member of the Design Trust for Public Space Art Committee and is currently on the Advisory Board Steering Committee for the Fashion Institute of Technology Interior Design Department, the IIDA Leaders Breakfast Event Committee and the DIFFA Dining by Design Steering Committee.

The background of the entire page is an abstract, fluid, and organic pattern of blue liquid or smoke. The colors range from a deep, dark blue on the left to a very light, almost white blue on the right. The lines are thin, wispy, and interconnected, creating a sense of movement and depth. The overall effect is ethereal and modern.

BUILDING REPOSITIONING/ BUILDING AMENITIES

8 ENTRIES

BUILDING REPOSITIONING/BUILDING AMENITIES



TWO DRYDOCK SGA (MA)

Bala Consulting Engineers / Kalin Associates / Simpson Gumpertz & Heger / Sladen Feinstein Integrated Lighting, Inc. / WSP / Lemon | Brooke / Thornton Tomasetti / Code Red Consultants / RWDI



1200 CROWN COLONY

Fusion Design Consultants (MA)

Daltile / illuminate / Creative Office Pavilion / Bowdoin Construction / Bridge Investment Group / Boston Building Wraps / Newmark



FALMOUTH BARN HOME

Stephen Peck Interior Design (ME)

Emerald Builders / Briburn Architecture For Life / L&L Structural Engineering / Modern Edge Metal Fabrication / Jared Bernier Fine Carpentry / ReVision Energy / Marvin Windows / Francois Gagne / Connectivity Works / Blue Rock of Maine



THE OUTLOOK AT ST. GABRIEL'S AMENITY SPACES

Bargmann Hendrie + Archetype (MA)

Consigli / Sladen Feinstein / Acentech / Boston Art / Petra Hausberger / Stained Glass Resources / DePaoli Mosaic Company / Millwork One / DeAngelis Iron Works / Cabot, Cabot & Forbes



121 MIDDLE STREET LOFTS

Ealain Studio (ME)

Monaghan Woodworking Inc / M.R. Brewer / Historic Preservation / Sylco Cabinetry Inc. / Thos. Moser / Lightology / Seura / Mirror Image / Astoria Compass / Storgio Ventura Inc.



401 PARK REPOSITIONING

Elkus Manfredi Architects (MA)

Suffolk Construction / MacNamara Salvia / WSP / HDLC / LeBlanc Jones / VHB / Walker Consultants / The Green Engineer / Roll Barresi & Associates / Code Red Consultants



139 MAIN STREET

Arrowstreet Inc. (MA)

Wozny / Barbar & Associates, Inc. / Scheppe Lighting Design, Inc. / McNamara Salvia / John Moriarty & Associates



575 MADISON AVENUE

Amenta Emma Architects (CT)

ICON Interiors / CRAFT Engineering Studio / International Lighting / Todd Merrill Studio

The background of the entire page is filled with abstract, ethereal purple smoke or ink splatters. These splatters are most concentrated in the upper half of the image, with some reaching down towards the center. The colors range from light lavender to deep, dark purple, creating a sense of movement and depth. The overall effect is artistic and modern.

COMMUNITY AND CULTURE

5 ENTRIES

COMMUNITY AND CULTURE



E.C. SCRANTON MEMORIAL LIBRARY **Drumey Rosane Anderson, Inc (MA)**

Milliken Carpet / Mannington / The Robert H. Lord Company / Pro Spec Tile / Consulting Engineering Services / Girard and Company / Cambria / PPG Paints / KI / Haworth



RIVER CENTER BRANCH LIBRARY **Schwartz/Silver Architects (MA)**

Herman Miller / Daltile / KI / Patcraft / Tandus Centiva / WHLC Architecture / AOS / Associated Design Group / Shen Milsom Wilke



THE FREDERICK GUNN SCHOOL, THOMAS S. PERAKOS ARTS AND COMMUNITY CENTER

The S/L/A/M Collaborative;
Connecticut Office (CT)

Cavanaugh Tocci Associates, Inc. / O&G Industries
/ Halvorson Tighe & Bond Studio / Haley & Aldrich /
Consulting Engineering Services



ROXBURY BRANCH OF THE BOSTON PUBLIC LIBRARY RENOVATION

Utile, Inc. (MA)

WSP / Simpson Gumpertz & Heger / Sladen Feinstein Integrated Lighting, Inc. / Acentech / RSE Associates / Building, Fire & Access, Inc. / Samiotes Consultants, Inc. / BSC Group / Smith & Wessel Associates, Inc. / McPhail Associates, LLC


IIDA NE DESIGN AWARDS | 26



165 CAPITOL AVENUE

Amenta Emma Architects (CT)

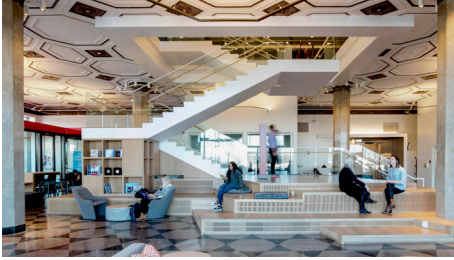
BVH Integrated Services / Gilbane Building Company / Simpson Gumpertz & Heger / LAM Partners / Herman Miller / Fuss & O'Neill / Landworks Studio / Skanska

The background of the entire page is an abstract, artistic composition of blue ink splashes and swirls on a white background. The ink forms intricate, organic patterns that resemble smoke or liquid in motion, creating a sense of depth and movement. The colors range from light, airy blues to deep, dark ceruleans.

**EDUCATION
SMALL
(UNDER 50,000 SF)**

4 ENTRIES

EDUCATION SMALL (UNDER 50,000 SF)



BOSTON UNIVERSITY HOWARD THURMAN CENTER FOR COMMON GROUND

NBBJ; Boston (MA)

Walsh Brothers / Acentech / LAM Partners / Mark Richey / Office Resources / Red Thread / The Green Engineer / RFS Engineering



MEDICAL SCHOOL STUDENT LEARNING CENTER

E4H Environments for Health Architecture (MA)

Shawmut Design and Construction / RW Sullivan Engineering / Creative Office Pavilion / Peabody Office



ROUX INSTITUTE AT NORTHEASTERN UNIVERSITY

SMRT Architects and Engineers; Portland, Maine (ME)

AD&W / Cianbro / Deblois Electric / Johnson & Jordan / Mannington Commercial / Plantwerks / Red Thread / Steelcase / Welch Sign / Windham Millwork



TRINITY INNOVATION CENTER

The S/L/A/M Collaborative; Connecticut Office (CT)

BVH Integrated Services / C&H Electric / Macri Associates

The background of the entire page is an abstract, artistic composition of blue ink splashes and swirls on a white background. The ink forms intricate, organic patterns that resemble smoke or liquid in motion, with varying shades of blue from light to dark. The overall effect is dynamic and fluid.

**EDUCATION
LARGE
(OVER 50,000 SF)**

5 ENTRIES

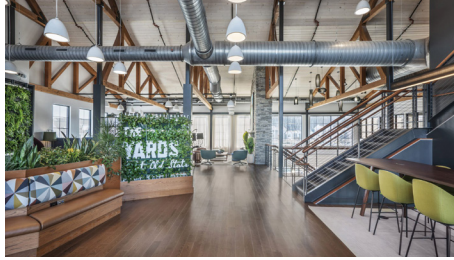
EDUCATION LARGE (OVER 50,000 SF)



DANIELS BUILDING

NADAAA (MA)

ERA Architects / Entuitive / MBII / Public Work / The Mitchell Partnership / Adamson Associates Architects



THE YARDS AT OLD STATE

Bergmeyer; Boston (MA)

Peabody Office / Boston Art / BKV Group / Kinsley Construction / Kimley-Horn and Associates, Inc



ENDICOTT COLLEGE ACADEMIC CENTER

Bergmeyer; Boston (MA)

Odeh Engineers / Windover Construction / Meridian Associates / Theater Projects / Intertek / RRC Engineering / North Shore Mechanical Contractors, LLC / Jay Steel, LLC



KING OPEN/CAMBRIDGE STREET UPPER SCHOOLS & COMMUNITY COMPLEX

Arrowstreet Inc. (MA)

Point Line Space / HLB Lighting Design / William Rawn Associates, Architects, Inc. / Copley Wolff Design Group / W.T. Rich / Garcia, Galuska & DeSousa / LeMessurier Consultants



KATE FURBISH ELEMENTARY SCHOOL

CHA Architecture, P.C. (ME)

Bennett Engineering / Becker Structural Engineers / Atlantic Resource Consultants / Joshua Tompkins Landscape Architecture LLC / Sashie Misner / Cavanaugh Tocci Associates / TabbTech / ColburnGuyette / Ledgewood Construction



HEALTH & WELLNESS

11 ENTRIES

HEALTH & WELLNESS



DRIVE CUSTOM FIT

PCA (MA)

illuminate / Creative Materials Corp. / TriMark / Bolon / Northeast Flooring / Mark Grundig / Bright Window Coverings / Hollman / Resource Office Furniture / Thor Performance Products



SOLINSKY CENTER FOR CANCER CARE AT THE ELLIOT

E4H Environments for Health Architecture (MA)

Bond / Bard, Rao + Athanas Consulting Engineers / Boston Art / Simon Design Engineering / Exposure Lighting



BKBX

Arrowstreet Inc. (MA)

Schwepe Lighting Design, Inc. / Vertical Solutions / Energy Squared / Roome & Guarracino / Stack Construction



COUNSELING & PSYCHOLOGICAL SERVICES AND HEALTH SERVICES

LLB Architects; Pawtucket, RI (RI)

Boston Light Source / Armstrong Ceilings / Shaw Contract / Crossville / Forbo / Site Specific / McKesson



EASTWAY REGIONAL RECREATION CENTER

Sasaki (MA)

Neighboring Concepts / McCracken & Lopez, P.A. / Stewart / LandDesign / Councilman-Hunsaker / Mondo Sports Flooring / Ecore / Performance Sports Systems / Autex / The Art Lifting Collection - Area Environments



MAINE PLASTIC SURGERY

CHA Architecture, P.C. (ME)

Hebert Construction, LLC / Shaw Contract / Johnsonite / Masland / Anthology Woods / Caesarstone / Skyline Design



DEMAKES FAMILY YMCA

Maugel Architects, Inc.; Harvard, Massachusetts (MA)

Simpson Gumpertz & Heger / ColburnGuyette / American Olean / Tetra Tech / Geosciences Testing and Research / Weston & Sampson / Gro Development / South Shore Gunitite / Strategic Spaces / Boston Light Source



AUERBACH CENTER AT BOSTON LANDING

Elkus Manfredi Architects (MA)

John Moriarty & Associates / HDLC / BR+A Engineering / SMMA Architects

HEALTH & WELLNESS



LAHEY LIFESTYLE HEALTH CENTER **SMRT Architects and Engineers; Andover,** **Massachusetts (MA)**

Armstrong Commercial Ceilings / Bolon / Camira
Fabrics / IOA / Lightology / Peluso Construction / Shaw
Contract / Stone Source / Tech Lighting / WB Mason



DANA-FARBER CANCER INSTITUTE - **CHESTNUT HILL** **Payette (MA)**

Herman Miller / Milliken Carpet / Forbo / Maharam /
AKF Group LLC / E3i / Selbert Perkins / Available Light
/ Cavanaugh Tocci Associates, Inc.



POMERLEAU FAMILY YMCA **Freeman French Freeman (VT)**

Daltile / Forbo / Armstrong Ceilings / KI / Engelberth
Construction / Interior Innovations / Mats Inc. / Swaney
Lighting / Corian

The background of the entire page is an abstract composition of blue ink splatters and washes on a white background. The splatters are of various sizes and densities, ranging from light, wispy clouds to darker, more concentrated areas. The colors transition from a pale cyan to a deep, vibrant blue. The overall effect is fluid and organic, suggesting movement and depth.

HOSPITALITY - HOTEL/LODGING

5 ENTRIES

HOSPITALITY - HOTEL/LODGING



CANOPY PORTLAND WATERFRONT

Ealain Studio (ME)

Baskerville / Cianbro / Bold Lighting / Neil Locke & Associates / Might & Main / Matt Hutton / Windham Millwork / Karina Steele / Preciosa Lighting / Plantwerks



WHITE ELEPHANT PALM BEACH

Elkus Manfredi Architects (MA)

LAM Partners / Emily Fine Art / Glidden Spina + Partners Architects / Fine Line Construction / DS Boca



THE GLEN HOUSE HOTEL AT MOUNT WASHINGTON

Stibler Associates, LLC. (NH)

BMA Architectural Group / Martini Northern, LLC. / The Olympia Companies



HAMMETTS HOTEL

DiLeonardo (RI)

Peregrine Group LLC / Union / Behan Bros / DeBlaux Purchasing, LLC / CD+M Lighting / Wozny / Barbar & Associates, Inc.



GRAND HYATT AL KHOBAR

Dileonardo (RI)

RTCC / Hyatt Corporation

An abstract, artistic image featuring a vibrant purple ink splatter on a white background. The ink forms intricate, swirling patterns that resemble smoke or liquid in motion, filling the left and center portions of the frame. The colors range from light lavender to deep magenta and dark purple.

HOSPITALITY - RESTAURANT/RETAIL

7 ENTRIES

HOSPITALITY - RESTAURANT/RETAIL



PRESSED CAFE

PCA (MA)

Pioneer Millworks / Boston Light Source / Cafco Construction / TriMark / Division 9 Collaborative / MSI Boston / Architetx / Fabrizio Architectural Millwork / Furniture Concepts / Mark Grundig



WOODS HILL PIER 4

Analogue Studio (MA)

Commodore Builders / BLW Engineers, Inc / MacNamara Salvia / Available Light / Cavanaugh Tocci Associates, Inc. / Harbour Foodservice Equipment / Newmark



SAMUEL ADAMS BOSTON TAP ROOM

Bergmeyer; Boston (MA)

Gilbane Building Company / L.A. Fuess Partners / Boston Art / Kalin Associates / Real Food Consulting / Bala Consulting Engineers / Treysta Project Solutions / Bohler Engineering / Workflow Interiors / Horton Lees Brogden Lighting Design



DRYFT

Arrowstreet Inc. (MA)

Grand Image / Wozny / Barbar & Associates, Inc. / Callahan Construction / Goldstein-Milano



LUNA RESTAURANT-BAR

Ealain Studio (ME)

Baskervill / Cianbro / Bold Lighting / Might & Main / Wintham Millwork / Preciosa Lighting / Plantwerks / Neil Locke & Associates / Huston & Company / Bijou



SUPERETTE

Bergmeyer; Boston (MA)

Dutra Architect Inc. / CMG / Blake Jarrett Fixture Co. / SDC Logistics and Delivery / Design of Brand / Superette



THE LEXINGTON

RODE Architects (MA)

BLW Engineers, Inc / Real Food Consulting / Shawmut Design and Construction / Workflow Interiors / illuminate / Blue Barn Builds / Concrete Collaborative / Eric Rueda Design Lab

The background of the entire page is a white canvas with several dynamic, organic shapes of varying shades of blue. These shapes resemble ink splashes or liquid being poured, with some areas being more saturated and others more translucent. The splashes are primarily concentrated in the upper and lower right portions of the frame, with some wispy trails extending towards the center and left.

RESIDENTIAL - MULTI-UNIT

9 ENTRIES

RESIDENTIAL - MULTI-UNIT



THE SMITH CBT (MA)

Suffolk Construction / Boston Art / Sladen Feinstein Integrated Lighting, Inc. / RW Sullivan Engineering / Vanderweil Engineers / Halvorson Tighe & Bond Studio / Nitsch Engineering / Howard Stein Hudson / Epsilon Associates



THE CALDWELL CUBE 3; Lawrence, Massachusetts (MA)

Procopio Companies / Dellbrook|JKS / DMS



WYSH HOUSE Quisenberry Arcari Malik, LLC (QA+M Architecture) (CT)

illuminate / Montagno Construction / PES Structural Engineers / Architx, LLC / RZ Design Associates, Inc. / Harry E. Cole & Son / GeoDesign Incorporated / DTC / Red Skies Photography / Kawneer



ORA SEAPORT Arrowstreet Inc. (MA)

WSP / Suffolk Construction / HLB Lighting / McNamara Salvia / Copley Wolf Design Group



RADIUS PCA (MA)

illuminate / Workflow Interiors / Interface / Creative Materials Corp. / Kettal / Shaw Contract / Area Environments / Division 9 Collaborative / Cranshaw Construction / EZ Millwork



83 GARDNER STREET Hacin + Associates (MA)

Odeh Engineers / RDK Engineers / LAM Partners / Peabody Office / Hamilton Construction Management Corp. / Ground, Inc. / Division 9 Collaborative / Juju Papers / Soden Sustainability Consulting / Camio Custom Cabinetry



500 OCEAN AVE Arrowstreet Inc. (MA)

Callahan Inc. / Wozny / Barbar & Associates, Inc. / Goldstein-Milano LLC / Sladen Feinstein Integrated Lighting, Inc.



OSPREY Bergmeyer; Boston (MA)

Peabody Office / Boston Art / illuminate / Brock Hudgins Architects / Matchstic / Balfour Beatty / Eric Rueda Design Lab / Atlanta Commercial Millworks, Inc. / Kimley-Horn and Associates, Inc.



THE ARCHER RESIDENCES

LDa Architecture & Interiors (MA)

Boston Art / Bernhardt / Peabody Office / McGrory
Glass / The Architectural Team / J Suss Industries /
Waterworks / Allegheny Contract / Phillip Jeffries /
DiscoverTile

An abstract, artistic image featuring a large, intricate splatter of purple ink on a white background. The ink forms a dense, central mass with numerous fine, radiating lines and wispy, feathered edges that spread out across the frame. The color transitions from a deep, dark purple in the center to a lighter, almost lavender hue towards the periphery. The overall effect is one of dynamic movement and organic complexity.

RESIDENTIAL - PRIVATE

7 ENTRIES

RESIDENTIAL - PRIVATE



STONEVIEW BARN + SPA

Knickerbocker Group (ME)

Carson Douglas Landscape Architecture / Freshwater Stone / Kallista / Morningstar Stone & Tile / Old Port Specialty Tile / Hammerton Studio / Square Manufacturing Co. / Tidewater Millwork / The Urban Electric Company / YARO Windows + Doors



PULPIT ROCK

Knickerbocker Group (ME)

David A. Fields / Old Port Specialty Tile Co / The Urban Electric Company / Kallista / Farrow & Ball / Schumacher / William Morris / Mitchell Associates / Mougalian Rugs / Cumberland Ironworks



VILLA VAROISE

NADAAA (MA)

Simpson Gumpertz & Heger / ECI / TPFI / JEAN MUS / Bidard & Raissi



LEDGE HOUSE

Hutker Architects (MA)

Cum Laude Group / Gregory Lombardi Design / Phoenix Audio Video / Phil Monat / Edward Stanley Engineers



MARLBOROUGH TOWNHOUSE 2

Hacin + Associates (MA)

FBN Construction / Furniture Design Services / TBR Marble & Granite / HDI Stair / System 7 / Designer Draperies of Boston / Montage / Steven King Carpets / Showroom Collezione / Casa Design Group



BACK BAY TOWNHOUSE

Hacin + Associates (MA)

Sea-Dar Construction / Herrick & White Architectural Woodworkers / Whetstone Workshop / Cumar / Maverick Integration / Eliot Wright Workroom / Lori MacKeil Designs / McLaughlin Upholstering Co / Steven King Carpets / Casa Design Group



THE BOTTLING PLANT

Atelier Cho Thompson; New Haven, Connecticut (CT)



**SCIENCE & RESEARCH
SMALL
(UNDER 45,000 SF)**

5 ENTRIES

SCIENCE & RESEARCH SMALL (UNDER 45,000 SF)



KRONOS BIO

Lab / Life. Science. Architecture, Inc. (MA)

AHA Engineers / The Richmond Group / TotalOffice Interiors / Interface / Boston Light Source / Armstrong Ceilings / Armstrong Flooring / Kayla Schwartz



WATERS CORPORATION-IMMERSE INNOVATION AND RESEARCH LAB

SMMA (MA)

Creative Office Pavilion / Commodore Builders / Interface / illuminate / Verrex / Nanawall / Chilewich Contract Flooring



CONFIDENTIAL CLIENT TENANT IMPROVEMENT

Ci Design, Boston Office (MA)

illuminate / TotalOffice Interiors / AVID Engineers / Trinity Engineering



JNANA THERAPEUTICS

Jacobs (MA)

Boston Light Source / New England Lab / PIDC / Strategic Spaces



AFFINIVAX

TRIA (MA)

The Richmond Group / Vanderweil Engineers / TotalOffice Interiors / Hereva / McNamara Salvia / Kayte Muse Creative / Code Red Consultants



**SCIENCE & RESEARCH
LARGE
(OVER 45,000 SF)**

4 ENTRIES

SCIENCE & RESEARCH LARGE (OVER 45,000 SF)



CONFIDENTIAL CLIENT R&D HEADQUARTERS

Perkins&Will; Boston (MA)

Bard, Rao + Athanas Consulting Engineers / LAM Partners / Office Resources / McGrory Glass / 3Form / DPR Construction / MBRE / Mohawk Group / Division 9 Collaborative / Armstrong Flooring / Armstrong Ceilings



FOGHORN THERAPEUTICS

TRIA (MA)

Wise Construction / Reflex Lighting / Alexandria Real Estate / R.W. Sullivan Engineering / Code Red Consultants / Goldstein-Milano



SCHOLAR ROCK

TRIA (MA)

F.L. Caulfield & Sons / NV5 / Code Red Consultants



THRIVE

Lab / Life. Science. Architecture, Inc. (MA)

Bard, Rao + Athanas Consulting Engineers / Creative Office Pavilion / The Richmond Group / Interface / Armstrong Ceilings / Armstrong Flooring / Dirtt / Boston Light Source / Aspire Audio Visual

STUDENT HOUSING

4 ENTRIES



STUDENT HOUSING



THE BIXBY

CUBE 3; Lawrence, Massachusetts (MA)

Plyboo / McShane Construction Company / Jordan & Skala Engineers / Kimley-Horn and Associates, Inc. / L.A. Fuess Partners



MIT SITE 4

NADAAA (MA)

ARUP / Acentech / Odeh Engineers / LAM Partners / Landworks Studio / Hargreaves Associates / Perkins&Will / Studio NYL / Nitsch



RISD NORTH HALL

NADAAA (MA)

Odeh Engineers / Landworks Studio / VHB



BOWDOIN COLLEGE HARPSWELL UPPER-CLASS STUDENT APARTMENTS

Lavallee Brensinger Architects (NH)

Creative Office Pavilion / Crossville / Mannington / Wright-Ryan Construction / Thornton Tomasetti / Shaw Contract / Formica / Wilsonart / Soelberg Acoustic Panels / Unalam

The background of the entire page is filled with intricate, swirling patterns of purple and pink ink. These patterns resemble smoke or liquid being poured into water, creating a sense of movement and depth. The colors range from light, airy purples to deep, vibrant magentas and pinks. The overall effect is ethereal and artistic.

UNBUILT

4 ENTRIES

UNBUILT



EMBLEM 120

CUBE 3; Lawrence, MA (MA)

Toll Brothers / Callahan Construction



REVOLUTION LABS

SGA (MA)

Acentech / AHA Engineers / HLB Lighting / Kalin Associates / IBI Group / McNamara Salvia, Inc. / The Green Engineer, Inc.



ROWAN

Arrowstreet Inc. (MA)

Kember / Division 9 Collaborative



FRESENIUS "FUTURE OF WORK"

Margulies Perruzzi (MA)

Officeworks / Fort Point Project Management / NV5 / iOffice / Vergesense

The background of the entire image is an abstract composition of vibrant purple ink splatters and wisps against a clean white background. The ink forms delicate, flowing lines and larger, more saturated blotches, creating a sense of movement and organic complexity. The colors range from light lavender to deep magenta.

WORKSPACE 20,000 SF OR LESS

7 ENTRIES

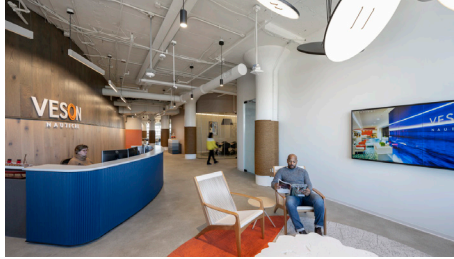
WORKSPACE 20,000 SF OR LESS



WORKBAR NEEDHAM

Analogue Studio (MA)

Union Office Interiors / Bulfinch / Limbach / Interstate Electric Services / The New Antiquity / SRP Sign Corporation



VESON NAUTICAL

CBT (MA)

Workflow Interiors / WB Engineers + Consultants / Corderman & Company / illuminate / Acentech / Spaceworks



CONFIDENTIAL HEALTH INSURANCE COMPANY EXECUTIVE SUITE

IA Interior Architects (MA)

Teknion / Officeworks / Steelcase / GHT Limited Engineers / AVI-SPL / Mohawk Group



UNITY TECHNOLOGIES

Margulies Perruzzi (MA)

Steelcase / Boston Light Source / Interface / Best Tile / WB Engineers / Cushman & Wakefield / Timberline Construction



ONEDIGITAL

Quisenberry Arcari Malik, LLC (QA+M Architecture) (CT)

Red Thread / Shaw Contract / illuminate / TakeForm / Cyr Woodworking / Titan Technologies / Red Skies Photography



ENGELBERTH CONSTRUCTION, INC. HEADQUARTERS RENOVATION

Lavallee Brensinger Architects (NH)

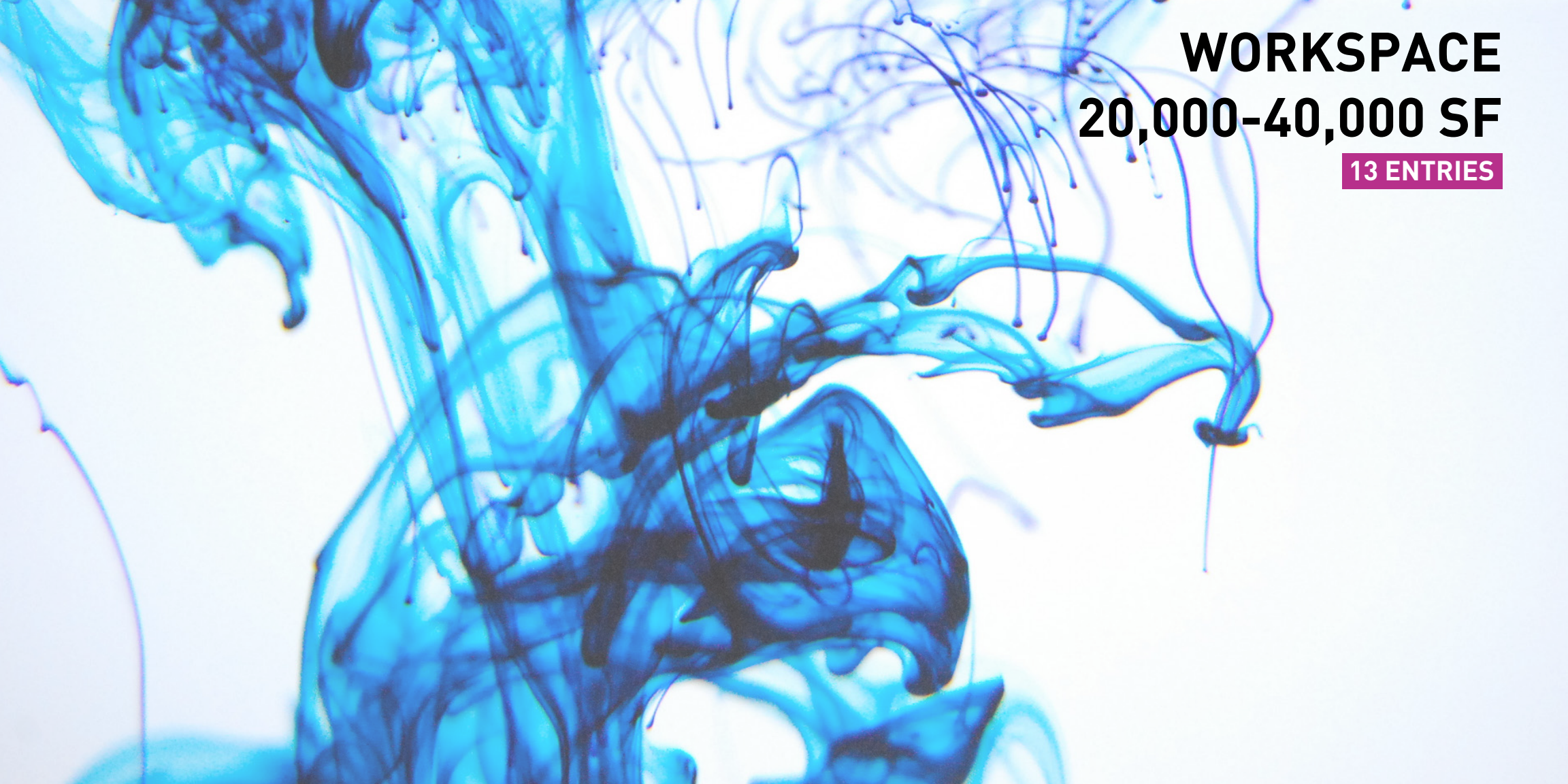
Interface / Office Environments / Mohawk Group / Corian / Wilsonart



CONNECTICUT INNOVATIONS

Amenta Emma Architects (CT)

Cavanaugh Tocci Associates, Inc. / RZ Design Associates / Urbane New Haven / Thornton Tomasetti / Eastern Glass / Barall & Konover Floors / Nanawall Systems / Bentley Mills / Soelberg Acoustic Panels



WORKSPACE

20,000-40,000 SF

13 ENTRIES

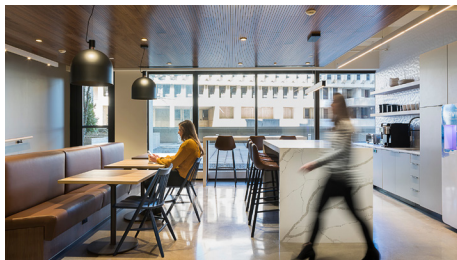
WORKSPACE 20,000-40,000 SF



VALO

Dyer Brown & Associates, Inc. (MA)

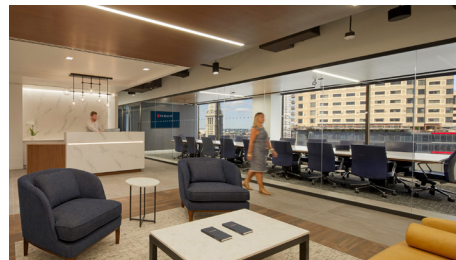
WB Engineers + Consultants / Creative Office Pavilion / Lake Contracting / Andy Ryan Photographer, LLC



WINNRESIDENTIAL

Dyer Brown & Associates, Inc. (MA)

Bala Consulting Engineers / C3 / Dish Design, LLC



TA REALTY

Fusion Design Consultants (MA)

Cushman & Wakefield / Lee Kennedy / Officeworks / Teknion / Shaw Contract / Reflex Lighting / Interface / NV5



SPECTRA MEDICAL DEVICES HEADQUARTERS

McMahon Architects (MA)

Boston Art / Interface / Officeworks / illuminate / BLW Engineers, Inc / C3 / Fraser Project Management / MDC / Votze Butler / Goldstein-Milano



FORCEPOINT CYBER EXPERIENCE CENTER

Gensler; Boston (MA)

Sladen Feinstein Integrated Lighting, Inc. / Structure Tone / Acentech / Design Communications, Ltd. / Media Monks / NV5 / McNamara Salvia / Code Red Consultants / Rare Volume



FREQUENCY THERAPEUTICS

Sasaki (MA)

STV / DPM / HLB Lighting / Boston Art / Teknion / Vivo Architecture / B. W. Kennedy Construction / Bluebird / Bentley Carpets / Erik Rueda Design Lab / Arktura



ANALYSIS GROUP - NEW YORK

CBT (MA)

HLB Lighting / Acentech / Structure Tone / Evenson Best / VVA / RDA / AVTEG / Severud Associates



CAMBRIDGE MOBILE TELEMATICS

SMMA (MA)

Turner Construction / Knoll / Office Resources / Dirtt / MIT Investment Management Company / Muuto / GoGraphics / Soft dB / Framery

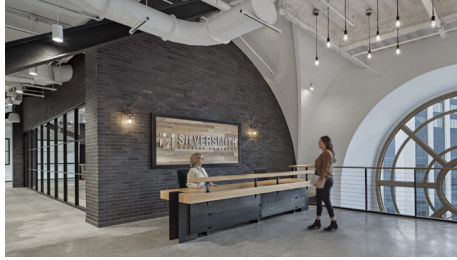
WORKSPACE 20,000-40,000SF



CHARLES RIVER ASSOCIATES/ BOSTON EXPANSION

Elkus Manfredi Architects (MA)

Shawmut Design and Construction / LAM Partners /
Kalin Associates / NV5 / LeMessurier Consultants



SILVERSMITH CAPITAL PARTNERS HEADQUARTERS

IA Interior Architects (MA)

WB Engineers + Consultants / Corderman & Company
/ Workflow Interiors / illuminate / Acentech / DCL /
Timber Chic Tom Shafer / Kenji Nakayama / Redgate



MURTHA CULLINA LAW FIRM

The S/L/A/M Collaborative; Connecticut (CT)

Integrated Interiors / Interscape / Bala Consulting
Engineers / Sarracco Mechanical Services



216 MASS AVE, PHASE 2, LEVELS 1 AND 2 RENOVATION

EYP Inc.; Boston (MA)

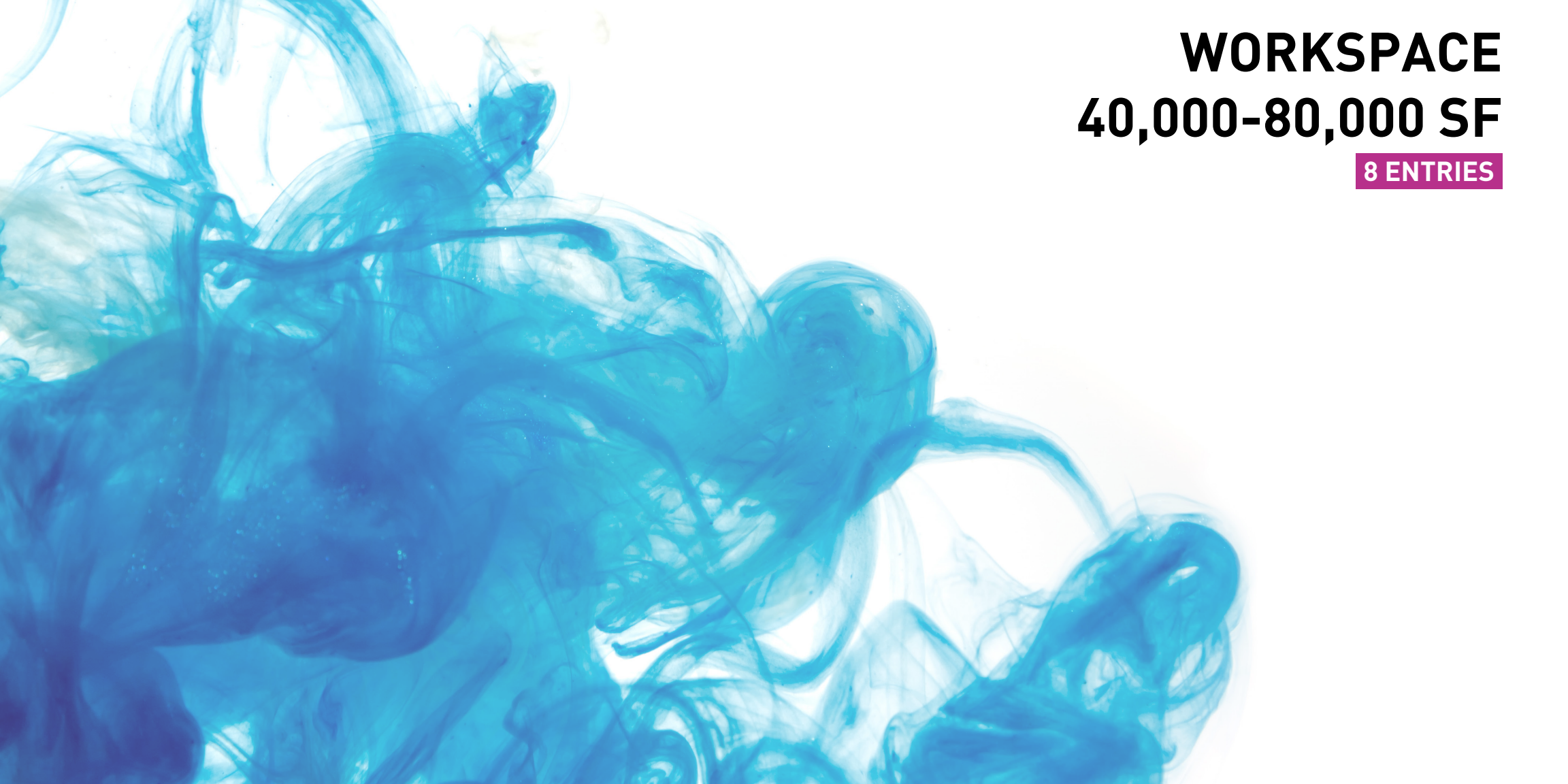
Cavanaugh Tocci Associates, Inc. / Gilbane
Building Company / Creative Office Pavilion /
Herman Miller / The Woodworks / Wiley Wilson



BROWN UNIVERSITY DEPARTMENT OF COMPUTING AND INFORMATION SERVICES (CIS) WORKSPACE

DBVW Architects (RI)

Wilkinson Associates Inc. / Wozny / Barbar &
Associates, Inc.



WORKSPACE 40,000-80,000 SF

8 ENTRIES

WORKSPACE 40,000-80,000 SF



MEKETA INVESTMENT GROUP

Fusion Design Consultants (MA)

illuminate / Lee Kennedy / Office Resources / WB Engineers + Consultants / Knoll / Jones Lang LaSalle / Crossville / National Development / Bentley Carpet / McNamara Salvia



HOGAN LOVELLS

CBT (MA)

Structure Tone / LAM Partners / Halcon / Haworth / CHIAD / NV5 / McNamara/Salvia / DeAngelis Iron Work, Inc. / Timberguy



WORKERS CREDIT UNION HEADQUARTERS

Maugel Architects, Inc.; Harvard, Massachusetts (MA)

ColburnGuyette / Greg Premru Photography / AIS / Vanderweil Engineers / BLW Engineers, Inc / Hancock Associates / Nauset Construction / Hastings Consulting



AMUNDI

Unispace (MA)

Structure Tone / LAM Partners / RW Sullivan Engineering / Officeworks / Office Resources / Union Office / Creative Office Environments / Bentley Mills / Sunne Savage Gallery



CBRE

Elkus Manfredi Architects (MA)

Cosentini Associates / LAM Partners / Kalin Associates / Structure Tone / Thornton Tomasetti



BIOTECH ORGANIZATION WORKPLACE

MDS/Miller Dyer Spears Inc. (MA)

STV / DPM / Lee Kennedy / WSP / Acentech / Creative Office Pavilion / Milliken Carpet / Boston Art / Walter A. Furman Co. / e3i Engineers



WIN WASTE INNOVATIONS HEADQUARTERS

Stibler Associates, LLC. (NH)

Farley White Interests / Aberthaw Construction Company, Inc. / Engineered Systems, Inc. / Vincent Dilorio, Inc. / Creative Office Pavilion / Interface / JD Charron, Inc. / DIRTT



BOSTON BEER COMPANY

Bergmeyer; Boston (MA)

Bala Consulting Engineers / Workflow Interiors / Reflex Lighting / Corderman & Company / Eric Rueda Design Lab / Expose Signs & Graphics / Inscape Furniture

The background of the image is an abstract, ethereal composition of swirling, smoke-like or liquid-like forms. The colors range from deep, vibrant purple on the left side to a soft, pale blue on the right side. The forms are layered and translucent, creating a sense of depth and movement. The overall effect is dreamlike and artistic.

WORKSPACE 80,000 SF OR MORE

8 ENTRIES

WORKSPACE 80,000 SF OR MORE



INTERNATIONAL DATA GROUP, INC. (IDG)

Dyer Brown & Associates, Inc. (MA)

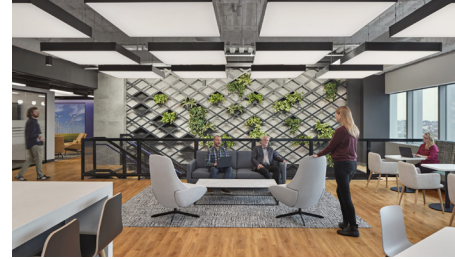
Bala Consulting Engineers / JDL Corporate Interiors / Office Resources / AIS, Inc. / Northstar Real Estate Services / Andy Ryan Photographer, LLC



CITIZENS BANK

SGA (MA)

Kalin Associates / WB Engineers + Consultants / McNamara Salvia / Code Red Consultants / Elite Studio E



NATIONAL GRID BROOKLYN RELOCATION

IA Interior Architects (MA)

WB Engineers + Consultants / MacNamara Salvia / LAM Partners / Cavanaugh Tocchi Associates, Inc. / Vanderweil Engineers / Northstar Project & Real Estate Services / James E. Fitzgerald Inc. / CDA Associates



WEX GLOBAL HEADQUARTERS

SMRT Architects and Engineers; Portland, Maine (ME)

Angela Adams / Bentley Mills / Cianbro / Creative Office Pavilion / Elizabeth Moss Galleries / Herman Miller / OFS / Tim Hill Fine Woodworking / Welch Sign / Windham Millwork



MATHWORKS AH2 RENOVATION

Gensler; Boston (MA)

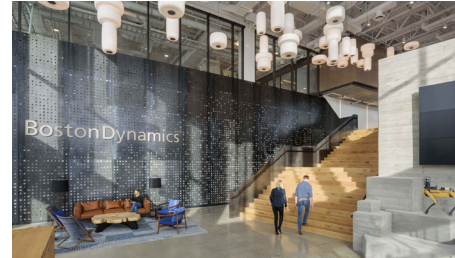
Consigli / Mark Richey / Creative Office Pavilion / Simpson Gumpertz & Heger / NV5 / McNamara Salvia / Lighting Workshop / Topakustik / DePaoli Mosaic Company / DeAngelis Iron Work, Inc.



OLYMPUS CORPORATION

SMMA (MA)

HLB Lighting / Redgate Real Estate Advisors / The Gutierrez Company / Red Thread / Cini Little International / Integrated at Work / DCL / Wayfinder Collaborative & Bluebird



BOSTON DYNAMICS

Bergmeyer; Boston (MA)

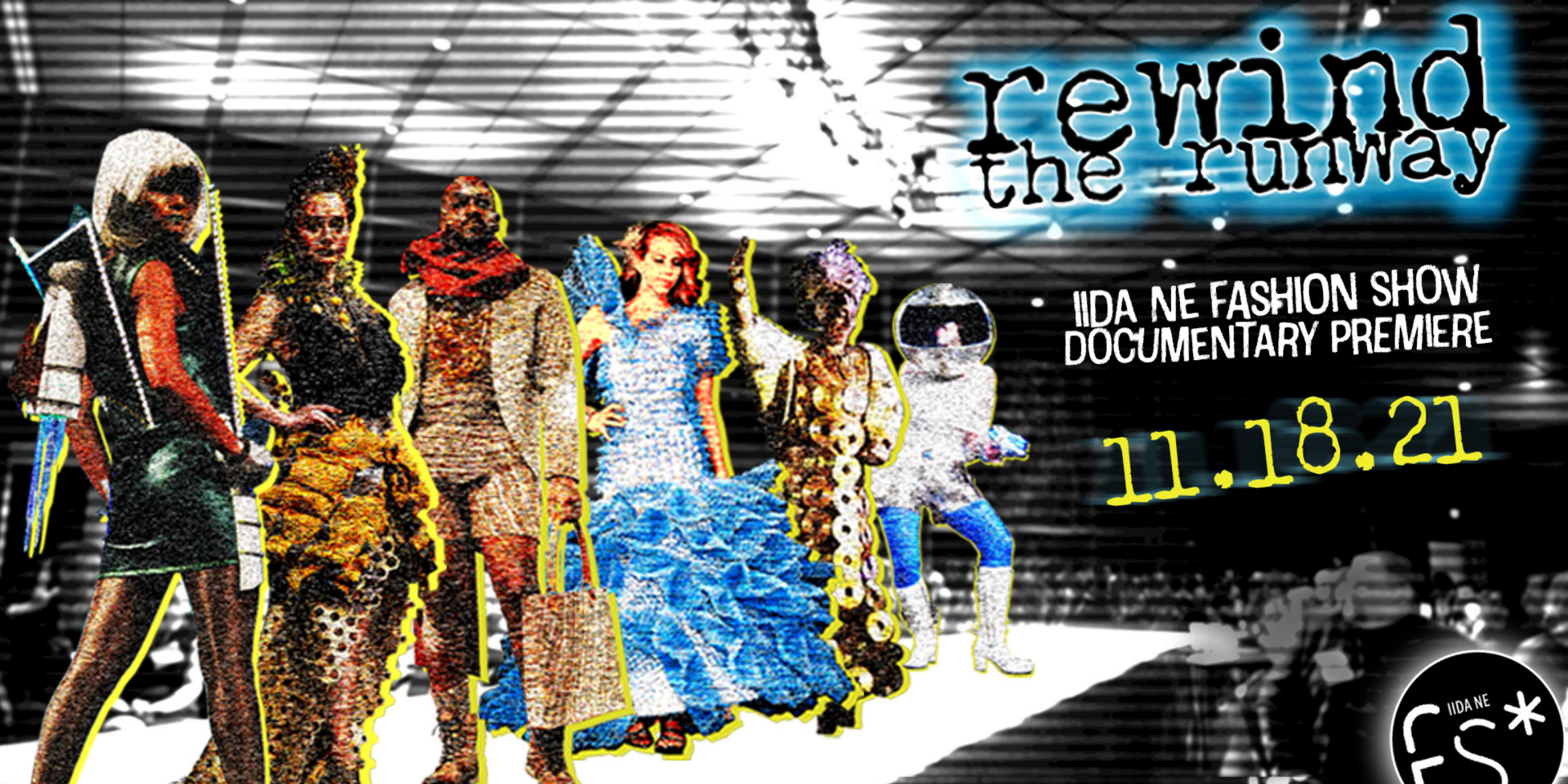
J. Calnan & Associates / Creative Office Pavilion / ColburnGuyette / Kalin Associates / CBRE / NV5 / Hartranft Lighting Design / Goldstein-Milano LLC / James Black Acoustics / Interstate Electrical Services



BERRYDUNN NEW CORPORATE HEADQUARTERS

Lavallee Brensinger Architects (NH)

J. Calnan & Associates / Creative Office Pavilion / Furniture Solutions FTW / Shaw Contract / Neokraft Signs Inc. / Plantwerks / SolarTech / Huston & Co. / SHIFT



rewind the runway

IIDA NE FASHION SHOW
DOCUMENTARY PREMIERE

11.18.21



SAVE THE DATE

OCTOBER 20, 2021

ART UNCORKED

JOIN US VIRTUALLY OR IN PERSON AT CURIO

134 CANAL STREET BOSTON, MA



IIDA
ne
DESIGN AWARDS

IIDA | NEW ENGLAND
chapter